

SHARP

AR-M316/AR-M256
Digital Multifunctional Systems



A **VERSATILE** SOLUTION FOR
EVERYDAY DOCUMENT DEMANDS



SHARP **DOCUMENT SOLUTIONS**



A MULTIFUNCTIONAL WAY TO OPTIMISE WORKFLOW

Powerful copying and optional network printing, scanning, and faxing functions driven by advanced digital technology are what allow the AR-M316/AR-M256 to bring outstanding performance to a wide range of businesses. Everyday document needs are met with speed and efficiency for optimum workflow, while various expansion options, such as a choice of automated job finishers, a network scanner kit, and the Sharpdesk application, offer productivity-boosting flexibility. Layers of industry-leading security features safeguard this multifunctional solution, and an 8.1-inch touch-screen LCD control panel makes it as easy to operate as it is secure.

KEY FEATURES

Efficient Copying

- Speedy output of max. 31/25 cpm and quick first copy out time
- Automated job finishing options include booklet making and hole-punching
- Optional 100-sheet Reversing Single Pass Feeder and standard stackless duplex module
- Productive Scan Once/Print Many, electronic sorting, and offset stacking
- Versatile image editing functions
- Job Build for large-volume documents

Powerful Printing

- RIP Once/Print Many function for 31/25 ppm
- Standard SPLC (Sharp Printer Language with Compression) printer
- Optional PCL5e/PCL6 and PS3 emulation
- Upgradeable to network printing^{*1} with network utilities
- Supports the latest operating systems and network protocols, including IPv6^{*1}
- Advanced print functions include PDF/TIFF direct printing^{*1}

Optional Network Scanning and Faxing

- Scan to e-mail/FTP server/desktop
- Sharpdesk for easy, integrated document management on a PC
- LDAP support for easy browsing of e-mail addresses
- PC-fax function enables fax transmission from a PC
- Duplex fax transmission and reception

Multi-Layered Security

- Secure network interface card restricts unauthorised access^{*1}
- Optional Data Security Kit erases confidential data
- SSL (secure sockets layer) and IPsec^{*2} for secure network communications
- Confidential Print secures printing with PIN code authentication
- User authentication for network scanning

User and Environment-Friendly

- 8.1-inch touch-screen LCD control panel
- Max. 2,100-sheet paper capacity with Auto Tray Switching
- Job Separator option outputs copies and printouts/faxes onto separate trays
- Energy Star certified
- Lead and chromium-free design (RoHS^{*3} compliant)



AR-M316

*1: Requires optional AR-P27

*2: Available at a later date

*3: Restriction of the use of certain Hazardous Substances

COPY

EFFICIENT COPYING

100-Sheet Reversing Single Pass Feeder



When it comes to copying, the AR-M316/AR-M256 performs with speed and efficiency. A quick first copy out time and a speedy continuous copy rate ensure the quick handling of both short-run and large-volume outputs, while extra paper trays and auto tray switching minimise costly interruptions. The AR-M316/AR-M256 already comes with duplex copying, a Scan Once/Print Many function and offset stacking, but other time-saving options, like automated job finishers, can be added.

at a glance...

- **Fast copying** at 31 cpm (AR-M316) and 25 cpm (AR-M256)
- **Quick first copy out time** — 4.5 seconds (AR-M316) and 4.8 seconds (AR-M256)
- **Convenient 100-sheet RSPF** (Reversing Single Pass Feeder) makes any scan job easy; even double-sided documents are handled automatically^{*1}
- **Built-in duplex module** saves paper costs and filing space
- **Scan Once/Print Many, electronic sorting, and offset stacking** for highly productive copying
- **Large paper supply** of up to 2,100 sheets
- **Auto tray switching** reduces interruptions by automatically switching to a different tray when the first becomes empty
- **Job Build function** — large-volume jobs can be scanned in batches and stored for output as a single job^{*2}
- **Digital auto exposure control** and **Text/Photo** mode ensure optimum copy quality
- **Image editing functions** — multi-shot (4-in-1, 2-in-1), mirror image, and more

*1: Requires optional AR-RP7

*2: Requires optional memory. Measured using Sharp's standard chart (A4 with 6% coverage). The number of pages that can be stored for the Job Build function depends on the machine's memory capacity and other conditions.

A Variety of Job Finishing Options



Saddle stitching



Hole punching

Automated Finishing Options

Optional finishing peripherals capable of multi-position stapling, saddle stitch booklet finishing, and hole-punching can be added to create professional-looking documents.

A finisher is also available for jobs that require only simple sorting and stapling.

8.1-inch LCD Panel

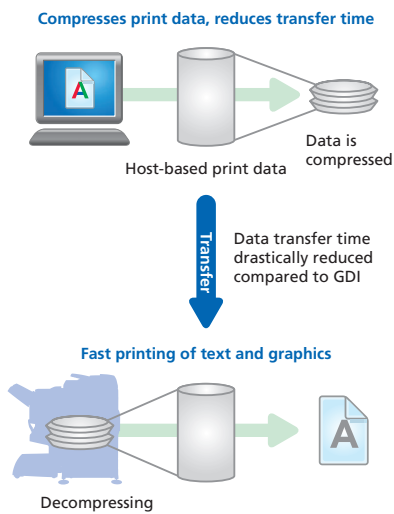
The AR-M316/AR-M256's logically designed control panel features a wide, clear touch-screen LCD with easy-to-follow guidance. For example, when adjusting the edge/centre erase function, the LCD displays step-by-step instructions to guide you through the necessary procedures.





POWERFUL PRINTING

SPLC (Sharp Printer Language with Compression) Printing



The quality, speed and ease with which the AR-M316/AR-M256 handles even high-volume print jobs are proof of its printing power. High-quality imaging technology turns out professional-looking documents every time. The RIP Once/Print Many function ensures efficient multiple-print production with only a single, easy download of data from your PC. And additional productivity can be gained by upgrading the AR-M316/AR-M256 to network printing.

at a glance...

- **Fast, efficient printing** of 31 ppm (AR-M316) and 25 ppm (AR-M256)
- **Duplex printing** saves you filing space and paper costs
- **Standard SPLC** (Sharp Printer Language with Compression) for speedy data transfer and printing
- **Supports PCL5e and PCL6¹** printer language emulations; PostScript 3 is available² for compatibility with more fonts and better graphics handling
- **PDF/TIFF direct print³** — save valuable time by printing PDF and TIFF files without using the printer driver, direct printing from a Web page, or direct printing of e-mail attachments
- **Network printing¹** supports the latest and most commonly used network operating systems and protocols, including Windows Vista™ (available at a later date) and next-generation IPv6
- **Offset stacking** outputs each print job slightly set apart from the previous for easier retrieval
- **Job Separator⁴** prevents print jobs from getting mixed with copy/fax jobs
- **Convenient printing functions** — N-up, fit-to-page, watermarks, and more

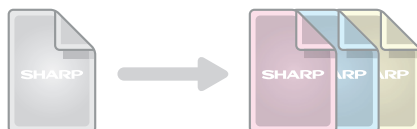
*1: Requires optional AR-P27

*2: Requires optional AR-PK1N

*3: Direct PDF printing requires optional AR-PK1N; may not support all PDF or TIFF file formats

*4: Requires optional AR-TR3

Various Applications



Carbon copy print



Form overlay

High-Quality Imaging

The AR-M316/AR-M256's fine particle toner technology, 1200 x 600 dpi resolution*, and 256-level greyscale ensure that all your printing needs will be met with exceptionally crisp, clear, and professional-looking documents.

* Equivalent with smoothing

Special Applications

- **Carbon copy print** — print multiple copies of the same data on plain and/or coloured paper fed from different paper trays
- **Form overlay** — store document formatting such as letterheads, eliminating the need for pre-printed paper
- **Barcode font print capability** allows convenient in-house production of barcoded documents (requires optional AR-PF1 Barcode Font Kit)

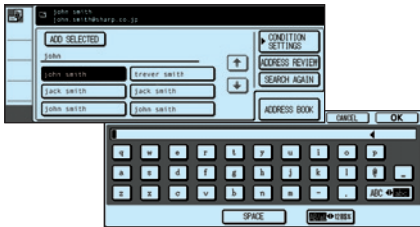
* Requires optional AR-P27

SCAN

FAX

NETWORK SCANNING AND FAXING

With network scanning and faxing options, the AR-M316/AR-M256 can transmit documents with speed and facility for better workflow. Adding a network scanner expansion kit allows paper-based documents to be converted to editable digital files for quick and easy distribution by direct scanning to a server location, an e-mail attachment, or your PC desktop. And adding the Super G3 fax expansion kit saves you time by putting high-speed faxing to work.



QWERTY keyboard for LDAP and others

at a glance...

- **100-sheet RSPF¹** makes scan jobs quick and easy
- **Job Separator²** prevents incoming faxes from getting mixed with copy/print jobs

SCAN

- **A3 network scanning** to your PC desktop, e-mail, or FTP server
- **Easy text entry** — preset frequently used e-mail subject titles or messages for easy one-touch entry or directly enter text from the AR-M316/AR-M256's LCD control panel
- **Lightweight Directory Access Protocol (LDAP)** support allows easy browsing and storing of e-mail addresses for rapid distribution of scanned documents, as well as automatic synchronisation with your primary e-mail server

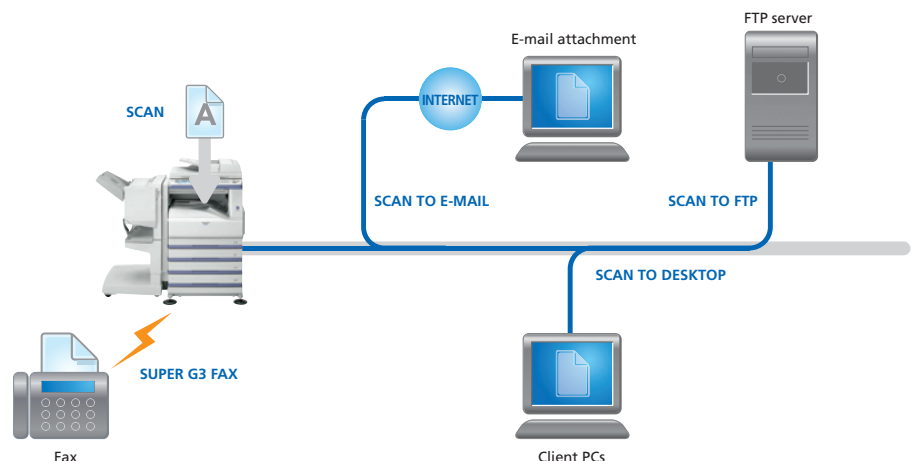
FAX

- **High-speed faxing** — Super G3/JBIG compression for extra speed
 - on-line transmission reduces total operation time
 - 500 one-touch auto dial keys
- **Duplex faxing** — send or receive single or double-sided³ faxes up to A3 in size
- **PC-Fax** — send data directly from a PC to a fax machine without printing to paper
- **Flash memory** — prevents data loss in case of power failure

*1: Requires optional AR-RP7

*2: Requires optional AR-TR3

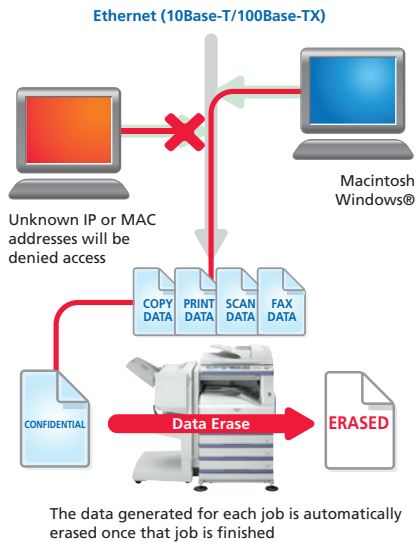
*3: Requires optional RSPF to send two-sided documents



PRINT

COPY

EFFECTIVE SECURITY AND UTILITY SOFTWARE

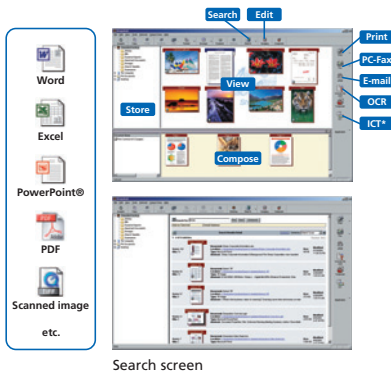


With the AR-M316/AR-M256, your network and data are protected by multiple layers of Sharp's industry-leading security solutions designed to block unauthorised access, audit usage, and restrict access via user identification. And network utility software and Sharp's original Sharpdesk document management software make it easier than ever to maximise efficiency.

at a glance...

- **Data Security Kit**^{*1*} erases any data in internal memory safely and completely after use
- **Secure network interface card**^{*2} provides a firewall that prevents direct connection and access by unauthorised users (IP/MAC address filtering)
- **Secure Sockets Layer (SSL)**^{*2} encrypts data communications to prevent data leakage through the network; supports HTTPS and IPP-SSL^{*3}
- **IPv6 and IPsec compatibility**^{*2*} ensures an even higher level of network security
- **Confidential data storage and printing** protects sensitive information by requiring the user to enter a PIN code before the documents are produced
- **User authentication** requires logging into the machine with passwords for machine access
- **Auditing mode** — keep track of and control the amount of use by employee or department
- Network utility software^{*2} — **Printer Administration Utility** allows easy network setup via a Web browser
— **Printer Status Monitor** allows remote printer monitoring on your PC

*1: Optional AR-FR25 (AR-M316) or AR-FR24 (AR-M256)
 *2: Requires optional AR-P27
 *3: SMTP-SSL, POP3-SSL, and FTPS available at a later date
 *4: Available at a later date



Search screen

* Image Compression Tool for converting images into high-compression PDF files

Easy Document Management with Sharpdesk

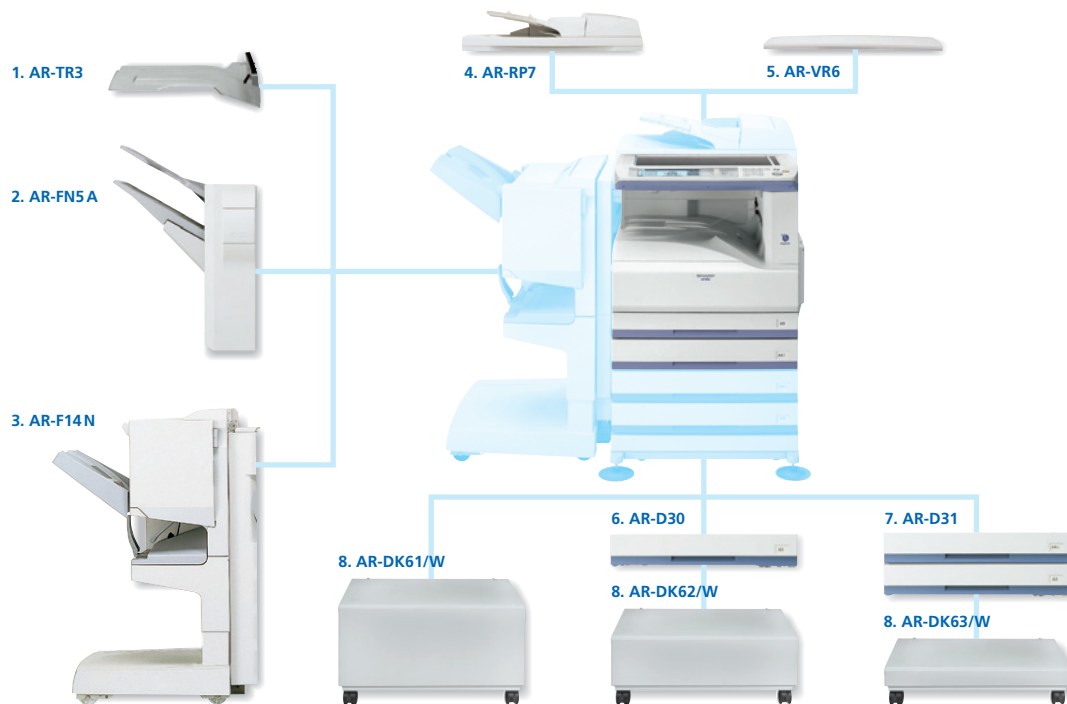
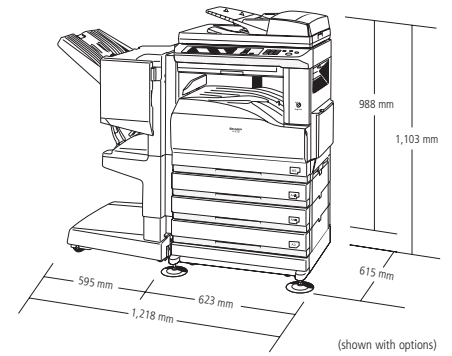
Sharp's original document management software, Sharpdesk, lets you manage documents in over 200 file formats in a single application right on your PC desktop, making it possible to integrate scanned paper-based documents and files created in popular applications such as Word. Features include:

- Intuitive desktop display features thumbnail viewing
- Sharpdesk Imaging provides annotation tools for paper-free proofreading
- Sharpdesk Composer combines different types of files into a single document
- Optical character recognition converts documents into editable text files
- Output zone distributes files to e-mail, printers, and other applications
- File search allows searching by file name, keyword, or thumbnail

SCAN

FAX

OPTIONS



Finishing

- 1. AR-TR3 Job Separator Tray**
Separates output according to the type of job (print/copy/fax)
- 2. AR-FN5 A Finisher**
A3 to B5R (offset), A3 to A5 (non offset)
Tray (upper): max. 100-sheet paper capacity*1
Offset tray (lower): max. 1,000-sheet paper capacity*1
Stapling capacity: max. 30-sheet multi-position staple
- 3. AR-F14 N Saddle Stitch Finisher**
A3 to A5 (offset), A3 to B4 (non offset)
Offset tray (upper): max. 1,000-sheet paper capacity*1
Saddle stitch tray (lower): 10 sets (6 to 10 sheets), 20 sets (1 to 5 sheets)
Stapling capacity: max. 50-sheet*2 multi-position staple
Staple position: 3 locations (front, rear or both)

Note: Requires AR-D30 or AR-D31 and/or locally available cabinet.

Optional hole punch function for AR-F14 N:

- AR-PN1A 2-Hole Punch Unit**
- AR-PN1C 4-Hole Punch Unit**
- AR-PN1D 4-Hole Wide Punch Unit**

*1: A4 or smaller, 80 gsm

*2: A4 or smaller, 80 gsm; 25 sheets for B4 or larger

Base Unit

- 4. AR-RP7 Reversing Single Pass Feeder**
A3 to A5, 100 sheets (80 gsm), 35 to 128 gsm (simplex), 52 to 105 gsm (duplex)
- 5. AR-VR6 Document Cover**
- 6. AR-D30 500-Sheet Paper Feed Unit**
A3 to B5R, 500 sheets (80 gsm), 56 to 105 gsm
- 7. AR-D31 2 x 500-Sheet Paper Feed Unit**
A3 to B5R, 1,000 sheets (80 gsm), 56 to 105 gsm
- 8. Cabinet**
There are three cabinets available, depending upon the paper cassette configuration used.
AR-DK61/W Cabinet for 2 cassettes
AR-DK62/W Cabinet for 3 cassettes
AR-DK63/W Cabinet for 4 cassettes

Connectivity Board

- AR-P27 Printer Expansion Kit**
- AR-FX7 Fax Expansion Kit**
Super G3 fax module
- AR-MM9 8MB Fax Memory**
- AR-PK1 N PS3 Expansion Kit**
Enables PostScript printing
- AR-PF1 Barcode Font Kit**
- AR-PF2 Flash ROM Kit**
- AR-SM5/AR-SM6 256MB/512MB Memory**
- MX-NSX1 Network Scanner Expansion Kit**
- Additional Sharpdesk licenses:
MX-USX1 x 1 user
MX-USX5 x 5 users
MX-US10 x 10 users
MX-US50 x 50 users
MX-USA0 x 100 users
- MX-AMX1 Application Integration Module**

Available at a later date
AR-FR25U Data Security Kit
AR-FR25 Data Security Kit (Common Criteria validated)
Enables data erasure; for AR-M316

AR-FR24U Data Security Kit
AR-FR24 Data Security Kit (Common Criteria validated)
Enables data erasure; for AR-M256

SPECIFICATIONS

AR-M316/AR-M256

Digital Multifunctional Systems

General

Type	Desktop	
Technology	Laser	
Engine speed (max.) ^{*1}	A4, portrait	A3
AR-M316	31 cpm/ppm	17 cpm/ppm
AR-M256	25 cpm/ppm	13 cpm/ppm
Paper size	Max. A3, min. A5	
Paper weight	56 – 105 gsm (bypass: 52 – 200 gsm)	
Paper capacity	Standard: 1,100 sheets (two 500-sheet trays and 100-sheet multi-bypass tray) Maximum: 2,100 sheets	
Warm-up time ^{*2}		
AR-M316	Less than 25 sec.	
AR-M256	Less than 23 sec.	
Memory	Standard: 32MB Maximum: 1,056MB	
Power requirements	Rated local AC voltage ±10%, 50/60 Hz	
Power consumption (max.)	1.45 kW (220 to 240V)	
Dimensions (W x D x H)	623 x 615 x 665 mm	
Weight (approx.)	49.2 kg	
Features	Job build, pre-heat/auto power shut-off modes, toner save mode, user control (100 accounts)	

Copier

Original paper size	Max. A3	
First copy out time ^{*3}	Document glass	RSPF
AR-M316	4.5 sec.	9.3 sec.
AR-M256	4.8 sec.	9.3 sec.
Continuous copy	Max. 999 copies	
Resolution	Scan: 400 x 600 dpi Print: 600 x 600 dpi	
Gradation	Scan: 256 levels	
Zoom range	25 to 400% (50 to 200% using RSPF) in 1% increments	
Preset copy ratios	10 ratios (5R/5E)	
Features ^{*4}	Auto paper selection (mixed size feeding), auto magnification selection, paper type selection, auto tray switching, rotation copy, electronic sorting, margin shift, dual page copy, multi-shot (4-in-1, 2-in-1), cover insertion, pamphlet copy, 2-sided copy orientation change, XY zoom, edge/centre erase, black & white reverse ^{*5} , duplex copy, job programme, card shot	

Printer (standard SPLC driver)

Resolution	600 x 600 dpi
Enhanced resolution	600 x 1,200 dpi equivalent with smoothing
Memory	Shared
Interface	IEEE 1284, USB 2.0
Supported OS	Windows NT [®] 4.0 SP5 or later, Windows [®] 98/Me/2000/XP, Windows Vista [™]
Printer language	SPLC (Sharp Printer Language with Compression)
Available fonts	Host-based
Features	RIP Once/Print Many, fit to page, watermarks, image adjustment, duplex print, N-up (2/4), paper/output tray selection, offset output

Network Printer (optional AR-P27 required)

Resolution	600 x 600 dpi 600 x 1200 dpi equivalent with smoothing
Interface	10Base-T/100Base-TX
Supported OS ^{*6}	Windows NT [®] 4.0 SP5 or later, Windows Server [®] 2003, Windows [®] 98/Me/2000/XP, Windows Vista [™] , Mac OS 9.0 to 9.2.2, Mac OS X 10.1.5, 10.2.8, 10.3.3 to 10.3.9, 10.4 to 10.4.8
Network protocols ^{*6}	TCP/IP (IPv4, IPv6), IPX/SPX (NetWare), NetBEUI, EtherTalk (AppleTalk)
Printing protocols	LPR, Raw TCP (port 9100), POP3 (e-mail printing), HTTP, Novell Printserver application with NDS and Bindery, FTP for downloading print files, EtherTalk printing, IPP
PDL emulation	PCL 6/5e, PS3 emulation ^{*7}
Available fonts	80 fonts for PCL, 136 fonts for PS3 emulation ^{*7}
Features ^{*4,*8}	Job retention (print hold, proof print, confidential print), carbon copy print, pamphlet style, binding edge, N-up (2/4/8/16), cover/transparency insertion, form overlay, barcode font compatibility, negative image, mirror image, printer administration utility and status monitor, IP/MAC address filtering, direct PDF/TIFF printing, e-mail printing, font/form download, secure network communications (SSL and IPsec [LPD])

Network Scanner (optional MX-NSX1, AR-P27, and memory*9 required)

Scan Method	Pull scan (with TWAIN-supporting application) Push scan (via operation panel)
Resolution	200, 300, 400, 600 dpi
File formats	TIFF, PDF
Scanner utilities	Sharpdesk
Scan destinations	Scan to e-mail, desktop, FTP server
Features	LDAP support, direct entry (address, subject, message), 200 one-touch dials, group dials, broadcasting

Facsimile (optional AR-FX7 required)

Compression method	MH/MR/MMR/JBIG
Communication protocol	Super G3/G3
Transmission time	Less than 3 seconds ^{*9}
Modem speed	33,600 bps to 2,400 bps with automatic fallback
Transmission resolution	From Standard (203.2 x 97.8 dpi) to Super Fine (406.4 x 391 dpi)
Recording width	A3 to A5
Memory	Standard 2MB, expandable to 10MB
Grey scale levels	Equivalent to 256 levels
Features ^{*4}	Duplex transmission/reception, quick on-line transmission, error correction mode, F-Code compatibility (confidential, relay broadcast), 500 one-touch dials, group dials (up to 50 groups and 200 destinations), 8 job programmes, broadcasting number registration, polling, memory transmission/reception, auto reduction (transmission/reception), rotation transmission/reception, long original transmission (max. 1,000 mm) ^{*11} , print actual size, PC-Fax transmission ^{*12} , timer transmission, activity report, anti-junk fax, dual page scan

Options

Please refer to the Options section on the previous page.

*1: Copy mode: When copying same document continuously on portrait A4 plain paper in non-offset mode. Print mode: When printing same document continuously on portrait A4 plain paper in non-offset mode, excluding processing time. *2: Door left open for 60 seconds, standard condition, polygon motor stopped. *3: Portrait feeding of A4 sheets from main unit's 1st paper tray, polygon motor running. *4: Some features require option(s). *5: Not available in some regions. *6: Optional AR-PK1N required for Mac OS and EtherTalk. Windows Vista and IPsec available at a later date. *7: Optional AR-PK1N required for PS3. *8: Some features are not available according to the printer driver used. *9: 128MB or more additional memory. *10: Based on Sharp's standard chart with approx. 700 characters (A4 portrait) at standard resolution in Super G3 mode, 33,600 bps, JBIG compression. *11: Not available in Super Fine mode. *12: For Windows environments only.

SHARP

Sharp Central & Eastern Europe
a division of Sharp Europe
A-1020 Vienna
Handelskai 342
Phone: +43 / (0)1 / 72 719 - 0
Fax: +43 / (0)1 / 72 719 - 141
e-mail: marketing@scee.sharp-eu.com
More info under: www.sharp-cee.com



Design and specifications are subject to change without prior notice. All information was correct at time of print. The ENERGY STAR logo is a certification mark and may only be used to certify specific products that have been determined to meet the ENERGY STAR programme requirements. ENERGY STAR is a US registered mark. The ENERGY STAR guidelines apply to products only in the US, Europe, Australia, New Zealand, and Japan. Windows, Windows Server, and Windows Vista are registered trademarks of Microsoft Corporation. All other company names, product names, and logotypes are trademarks or registered trademarks of their respective owners. ©Sharp Corporation 2007
Ref: BR-AR-M316. All trademarks acknowledged. E&OE. Printed 04/2007.